

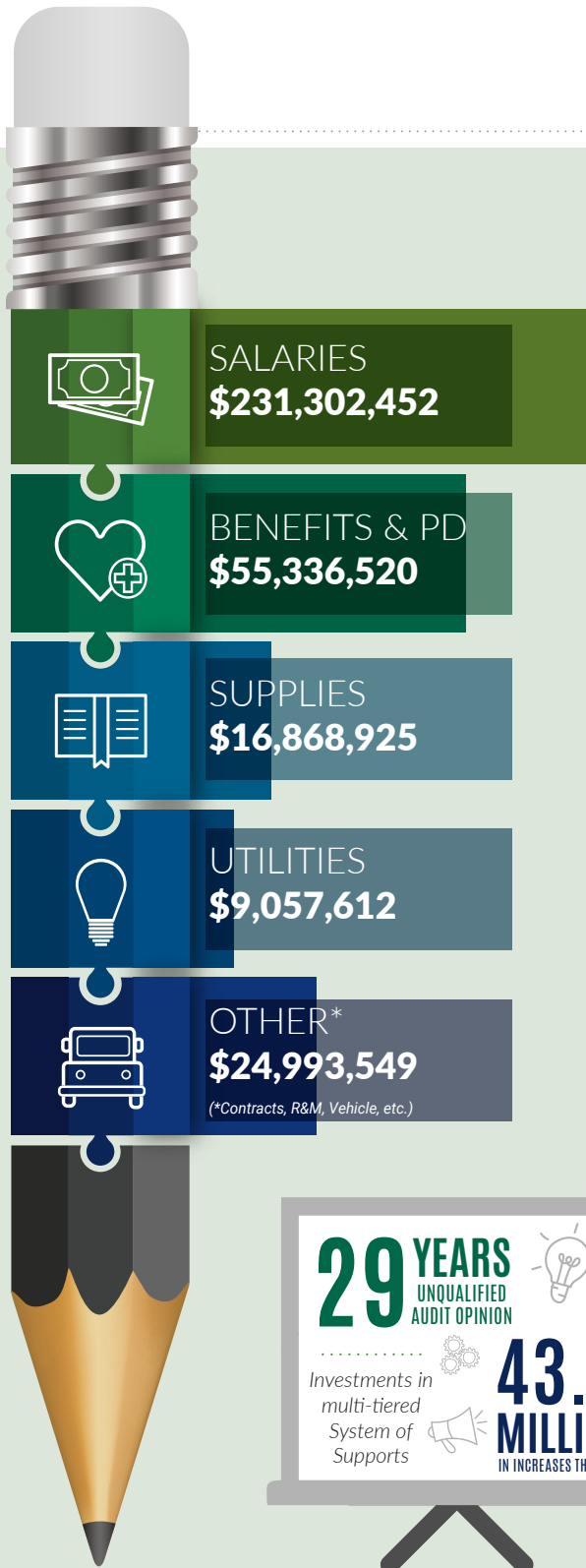
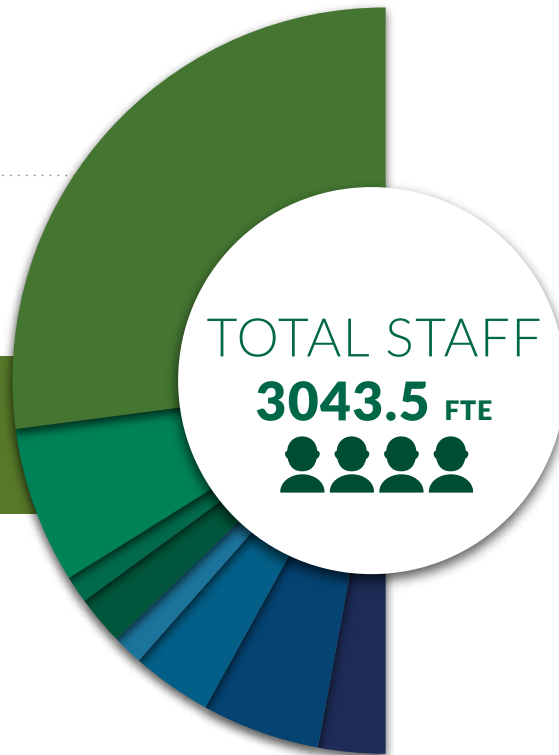


**Chignecto Central**  
Regional Centre for Education

# BUDGET HIGHLIGHTS

## Fiscal Year 2025-2026

- Educators & Admin **1647.9 FTE**
- EA's **413.3 FTE**
- AA's **72 FTE**
- Pre-primary **129.5 FTE**
- School Lunch **80.7 FTE**
- Bus Drivers **211.9 FTE**
- Custodians **176.9 FTE**
- Other **311.3 FTE**



**29 YEARS**  
UNQUALIFIED  
AUDIT OPINION

Investments in  
multi-tiered  
System of  
Supports

**43.7**  
MILLION  
INCREASES THIS YEAR



TOTAL EXPENDITURES  
**\$337,559,058**

TOTAL REVENUES  
**\$337,559,058**